

"Made For Valves" Loudspeakers

Why "Made For Valves"?

Icon Audio are virtually unique in making loudspeakers especially for valve amplifiers.

If you have a valve amplifier there are a number of reasons why you should consider our "MFVs".

Putting it simply valve amplifiers have a different "sonic signature" to solid state amplifiers and many modern loudspeakers cannot get the best out of valve amplifiers.

In the 20 years we have been manufacturing it has been obvious that many modern loudspeakers are not well suited to valve amplifiers, probably because they were not designed and tested with valve amplifiers in mind. All Icon Audio Loudspeakers are designed and tested with valve amplifiers so you are sure of the best results with each type of design.

1. As transistor power has got cheaper over the years, loudspeaker manufacturers in the quest for a "flat" frequency response are fitting more complex crossovers to "flatten" every peak in the frequency response. This has the effect of "throwing away" more and more power, with the outcome that a lot of valuable watts are wasted. This will cause lower powered amplifiers to run out of power on transient peaks and louder volumes.

2. Complex crossovers within the speaker present a "difficult load" to amplifiers with low or no feedback which obviously will not get the best sound from a valve amplifier.

3. Smaller loudspeakers usually use a 4 Ohm bass unit on the basis that a transistor amplifiers power doubles from 8 Ohms to 4 Ohms. This does not happen with valve amplifiers.

This inspiration from customers gave us the idea to manufacture our own loudspeakers that solved all the problems outlined above.

Starting from scratch assembling our own drive units "in house", specifying heavy duty MDF cabinets. Simple crossovers and high quality internal cable.

All Icon Audio loudspeaker drive units are assembled "in house" from the best materials and components.

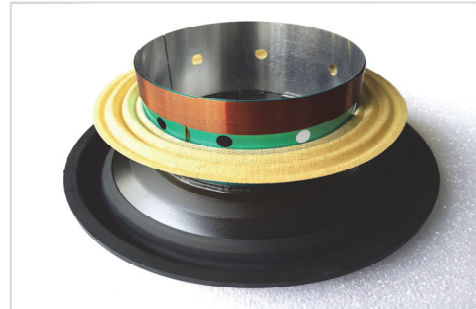
A well designed efficient loudspeaker with a more constant impedance will give vastly improved performance in terms of volume level, special image and more solid controlled bass.

A simple yet effective crossover ensures that the signal transfer from the amplifier has the minimum impact in order that the amplifier can "see" the speaker drive units clearly without excessive distortion.

The ease of driving means that as little as 15 watts will achieve an excellent volume ideal for large orchestral works in a large room.



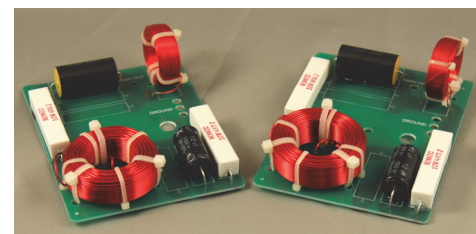
Voice coil assembly



Finished cone assembly



High quality Alloy basket



Simple crossover



Magnet assembly



Thick cabinet Wall. Internal bracing.
High quality OFC Speaker cable